

## BeachheadSecure® Email Encryption Software Installation

**This software will run with a 30-day Free Trial license, after which it must be Activated.**

### Introduction

This document is a quick guide to downloading and installing the BeachheadSecure® Email Encryption for Outlook Addin. The installer is available in two different file formats.

- EXE files (same file works for 32 bit and 64 bit Outlook)
- MSI files (need to install using the correct file depending on Outlook “bitness”)

Instructions and download links for both are provided in the sections below.

We recommend using the EXE file for most users as it will automatically detect and install the correct version based on your “bitness” (32 or 64 Bit) of the Outlook client which may be different to the Windows Operating System “bitness”. In order to use the MSI, you will need to first know the “bitness” (32 or 64 Bit) of Outlook. The MSI is only recommended for mass deployments where administrators are pushing out silent installs or with users having problems with the EXE (because they may have installed and uninstalled different versions of Outlook on the computer).

**Installation requires Administrator permissions to install software and execute batch scripts.**

### Installation Steps

#### **STEP 1** Download the EXE to install

[https://customer\\_resources.s3.amazonaws.com/BeachheadSecure\\_v1/BeachheadSecureEmailEncryption.exe](https://customer_resources.s3.amazonaws.com/BeachheadSecure_v1/BeachheadSecureEmailEncryption.exe)

*The EXE will automatically detect the correct “bitness” of Outlook to install the correct package.*

#### **STEP 2** Close Outlook prior to installing the software

#### **STEP 3** Install the software on the PC (Right click on the .exe file and click **Run as Administrator**)

#### **STEP 4** Open Outlook

#### **STEP 5** Run the batch file to prevent Outlook from disabling the Addin ([read next section](#))

### **IMPORTANT:** Post Installation Task

- The app will install as an Addin to Outlook
- After installation, be sure to **set Outlook to prevent disabling this Addin**

**To accomplish this:**

**STEP 1** Open the Beachhead Addin software in Microsoft Outlook:

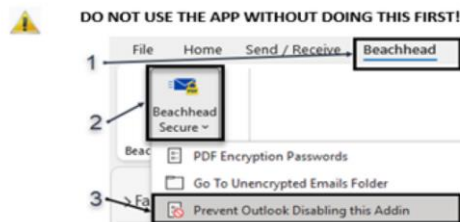
- After installation, open the **Beachhead** app in Outlook
- Navigate down the menu and click on **Prevent Outlook Disabling this Addin**
- Windows File Explorer will open the batch file folder on the drive

**IMPORTANT NEXT ACTION:**

After opening Outlook:

- (1) Click on Beachhead in the top menu to show the BeachheadSecure Add-in.
- (2) Click on BeachheadSecure in the Outlook ribbon.
- (3) Navigate to the item in the menu "Prevent Outlook Disabling this Addin" and follow the instructions.

You should only need to do this once after installation of this Addin.



**STEP 2** Run the batch file for the version of Outlook running on the PC to set the registry on the PC

(Right-click on the appropriate batch file and select/click **Run as Administrator**).

## Installations Using the MSI

**STEP 1** Check for the "Bitness" of Outlook installed on the PC

**When using the MSI to install the software, please check and confirm the "bitness" of Outlook running on the PC before installing the software!**

>> **32bit or 64bit Outlook?**

**WARNING** The Outlook version can be different to the Windows OS version. Always use the correct MSI when installing the BeachheadSecure Email Encryption software on computers.

**How to verify the Outlook version on Windows PC:**

- Open Outlook
- Click on File
- Navigate down to Office Account
- Click on About Outlook , then see the "bitness" on the top of the window:

About Microsoft® Outlook® for Microsoft 365

Microsoft® Outlook® for Microsoft 365 MSO (Version 2203 Build 16.0.15028.20152 **32-bit**)

**STEP 2** Download the MSI Installer

**32 bit:**

[https://customer\\_resources.s3.amazonaws.com/BeachheadSecure\\_v1/BeachheadSecureEmailEncryption\\_x86.msi](https://customer_resources.s3.amazonaws.com/BeachheadSecure_v1/BeachheadSecureEmailEncryption_x86.msi)

**64 bit:**

[https://customer\\_resources.s3.amazonaws.com/BeachheadSecure\\_v1/BeachheadSecureEmailEncryption\\_x64.msi](https://customer_resources.s3.amazonaws.com/BeachheadSecure_v1/BeachheadSecureEmailEncryption_x64.msi)

**STEP 3** Close Outlook prior to installing the software

**STEP 4** Install the software on the PC

**STEP 5** Complete the Post Installation Task as detailed on page 2 above.

❖ **Mass Deployment using the MSI files:**

You can use Active Directory or your favourite software deployment tool to do silent mass installations of the product. The script should have the following elements:

- 1) Prompt and close Outlook
- 2) Command line to launch installer silently: **msiexec /i <path to msi file> /quiet**
- 3) Run Settings import
- 4) Run batch file to Prevent Outlook Disabling this Addin

**Contact your Technical Support representative for guidance to complete a mass deployment.**

## Not Supported

Installations on the following operating environments are NOT possible and NOT supported.

- iOS or Android mobile devices
- MacOS
- Linux
- Webmail, web clients and Outlook for Web
- IMAP Accounts (possible but not officially supported)

**This software operates inside the Microsoft Outlook client on Windows 10/11 computers only.**

**Note:** Password encrypted PDFs containing any file attachments should be downloaded on the device first and opened using Adobe Acrobat Reader to view attachments files. A web view cannot display a PDF envelope and will therefore not show any attachment files inside a PDF.